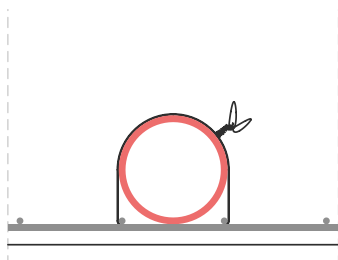
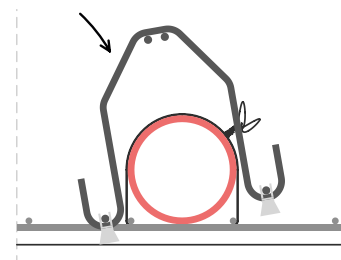


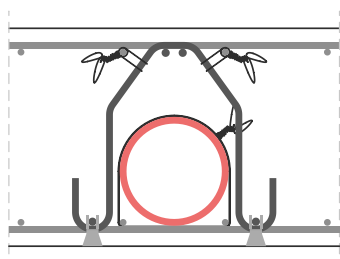
1 Poser la conduite



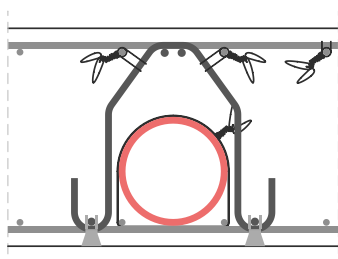
2 Fixer la conduite à l'armature inférieure



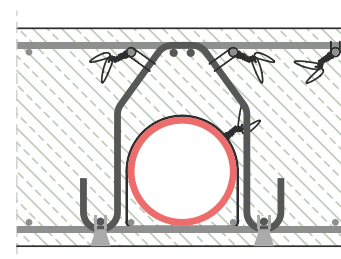
3 Poser les éléments **FIROLA®**
1 élément tous les 150 mm



4 Fixer les éléments **FIROLA®** à l'armature supérieure

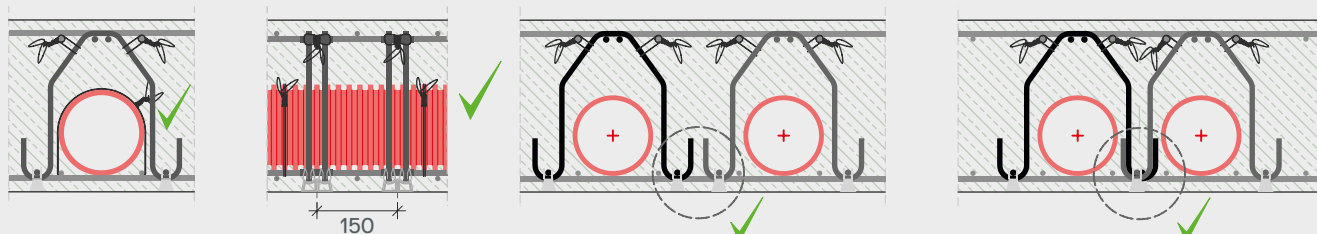


5 Fixer l'armature supérieure



6 Bétonner la dalle

Correct



Poser les éléments **FIROLA®** à la **verticale**.

Incorrect

